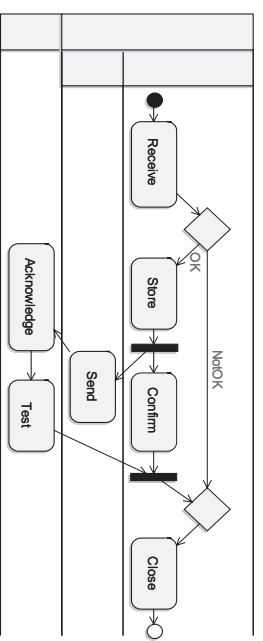
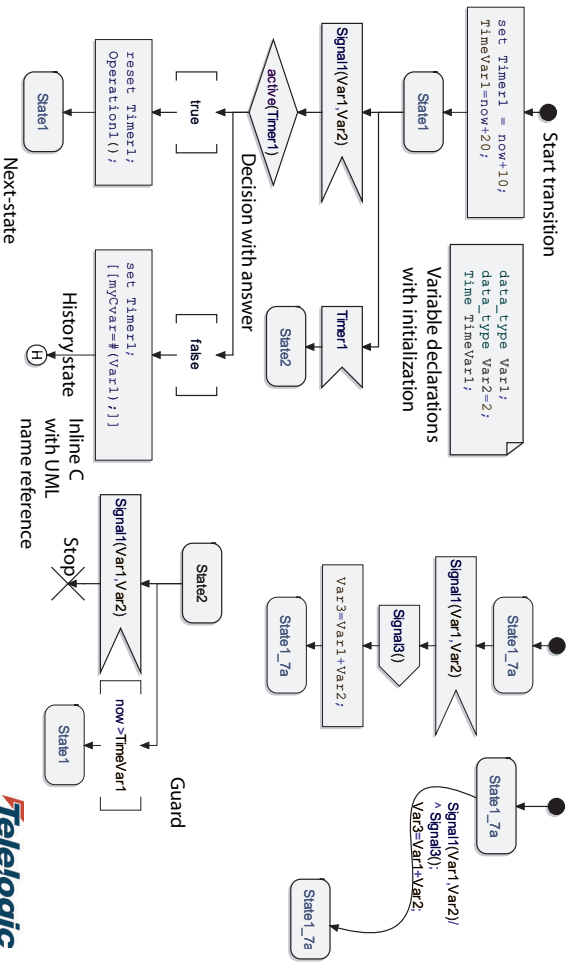


Activity Diagram



State Machine Diagram



Telelogic TAU

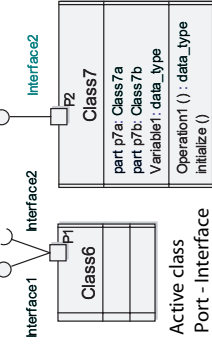
UML Quick Reference



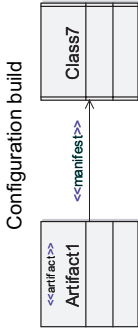
Package Diagram



Component Diagram



Deployment Diagram

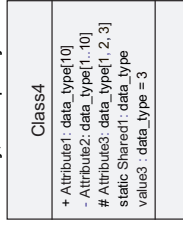


Class Diagram

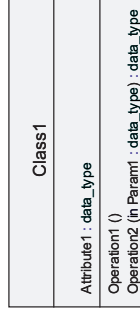
Operation with parameters



Attribute Visibility, Multiplicity



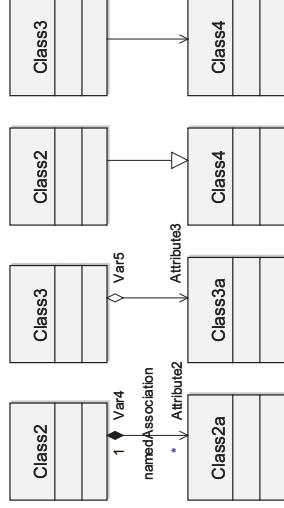
Passive class with attributes and operations



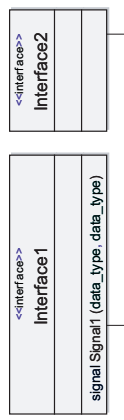
```

    /* Local type declarations */
    syntype data_type = Integer;
    const Integer value1=1;
    const data_type value2=2;
    class Class1 {
        data_type Attribute1;
        void Operation1();
        data_type Operation2 ( in data_type Param1);
    }
    
```

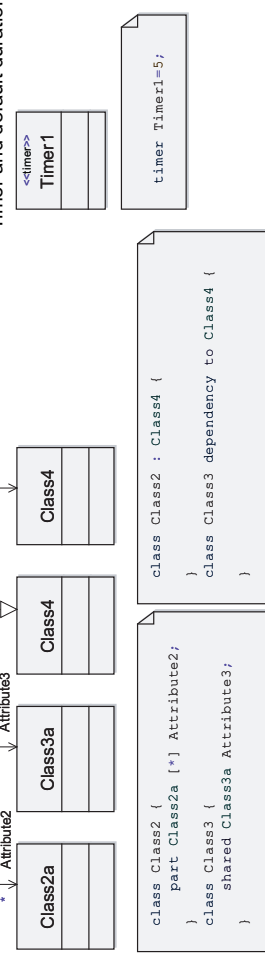
Association - Composition



Inheritance - Dependency



Timer and default duration

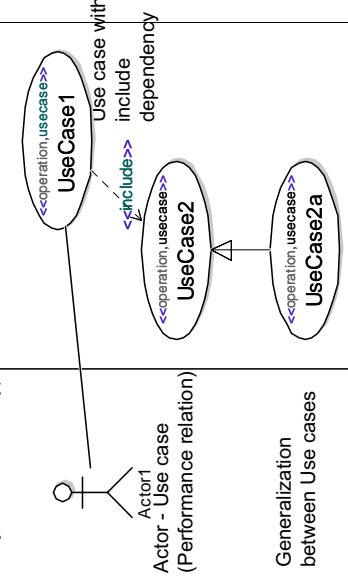


Text Diagram

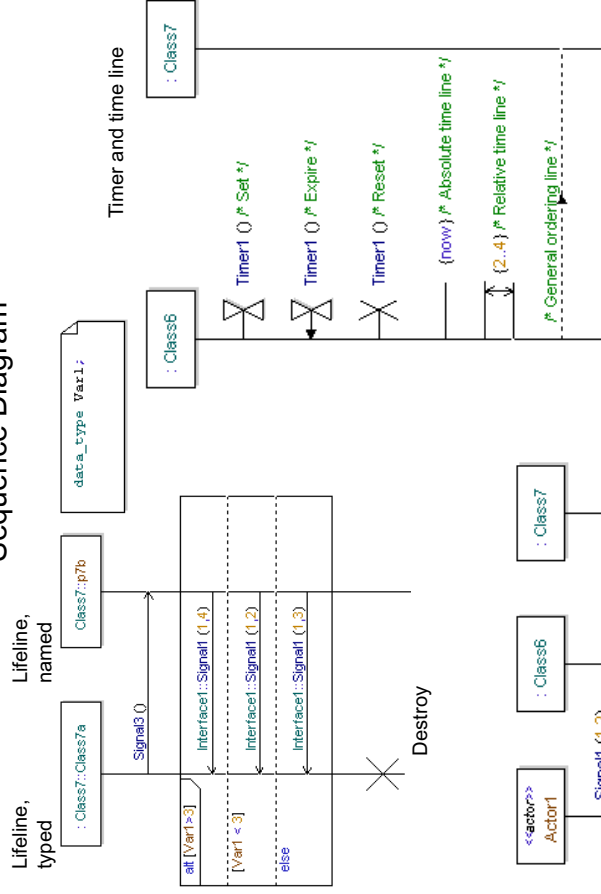
```

    data_type Operation1()
    {
        Integer i;
        Integer j=10;
        for (i=0;i<j;i=i+1)
            j=j-1;
        return j;
    }
    
```

Subject frame with type



Sequence Diagram



Referenced Use case